

# The sixth EIBSEE Meeting on CELLULAR MECHANISMS OF ALZHEIMER'S DISEASE

April 5 - 8, 2006

organized by Christian Haass (University of Munich)

*key note speaker:*

**D. Selkoe (Harvard Medical School)**

*speakers:*

**M. Buttini (Elan Pharmaceuticals)**

**K. Duff (Nathan S. Kline Institute)**

**P. St. George-Hyslop (University of Toronto)**

**C. Glabe (University of California)**

**C. Hock (University of Zurich)**

**F. LaFerla (University of California)**

**P. Saftig (University of Kiel)**

**M. Shelanski (Columbia University)**

**F. van Leuven (University of Leuven)**

**G. Yu (University of Texas)**

Deutsche  
Forschungsgemeinschaft &

**DFG**



**The sixth Eibsee Meeting  
(April 5-8, 2006)  
of the Priority Program**

**"CELLULAR MECHANISMS OF  
ALZHEIMER'S DISEASE (SPP1085)"**

**sponsored by the DFG  
&  
The Hans und Ilse Breuer Foundation**

**\*\*\*\*\***

**organized by:  
Christian Haass  
Adolf Butenandt Institute  
University of Munich  
Schillerstr. 44  
80336 Munich  
Germany  
Phone: ++49-89-5996-471  
Fax: ++49-89-5996-415  
e-mail: christian.haass@med.uni-muenchen.de**

## Location

### *Eibsee Hotel*

Am Eibsee 1-3

D-82491 Grainau

Phone: ++49-8821-9881-0

Fax: ++49-8821-82585

Email: [info@eibsee-hotel.de](mailto:info@eibsee-hotel.de)

[www.eibsee-hotel.de](http://www.eibsee-hotel.de)



## Travelling

**by train:** take the train to Garmisch (via Munich). In Garmisch please take a cab to the hotel (about 15-20 min drive).

**by plane:** from Munich airport take the S-Bahn to Munich Central station. At the central station take the train to Garmisch (about 1 hr); from here take a cab to the hotel.

**by car:** from Munich take the highway to Garmisch. In Garmisch follow the signs to Eibsee. The hotel is at the end of the road right at the foot of the Zugspitze.

## Weather

It's early spring and there will still be a chance for snow (in the skiing area on top of the Zugspitze snow is guaranteed). For those who like to go on the walk: please bring your hiking boots.

# PRELIMINARY PROGRAM

\*\*\*\*\*

**Wednesday, April 5**

Arrival, Hiking, Opening Lecture

- 14:00 The traditional “Scientific walk“ around the lake (if weather permits)
- 16:30 – 18:00 Welcome & Presentation of the Hans and Ilse Breuer Award**
- 16:30 **Welcome** (Prof. Dr. C. Haass)
- 16:45 **Presentation of the Hans and Ilse Breuer Award for Alzheimer’s Disease Research**  
(P. Breuer, Breuer Foundation and Prof. Reinhardt, Dean of the Medical Faculty,  
Ludwig Maximilians University Munich)
- 17:00 **Laudatio for Dr. Harald Steiner, Recipient of the first Hans and Ilse Breuer Award**  
(Prof. Dr. Reinhardt)
- 17:15 – 18:15 Opening Lecture**  
**Dennis Selkoe, Harvard Medical School, Boston, USA**  
(sponsored by the Hans and Ilse Breuer Foundation & Boehringer Ingelheim)  
Harnessing molecular biology to cure Alzheimer’s Disease: “Never, ever quit!”

*18:15 Cocktails*

sponsored by the Hans und Ilse Breuer Foundation

*19:30 Dinner*

**Thursday, April 6**

- 9:00 – 12:30 Secretases I**  
*Chair:* E. Mandelkow
- 9:00 – 9:30 G. Yu, University of Texas Southwestern Medical Center, Dallas, USA  
Role of Nicastrin in  $\gamma$ -secretase substrate recognition
- 9:30 – 10:00 H. Steiner, University of Munich, Germany  
Functional characterization of  $\gamma$ -secretase subunits
- 10:00 – 10:30 C. Kaether, Leibniz Institute for Age Research, Jena, Germany  
Rer1 is an assembly factor for the  $\gamma$ -secretase complex

*10:30 – 11:00 Coffee Break*

- 11:00 – 11:30 P. St. George-Hyslop, University of Toronto, Canada  
Genes and Alzheimer's Disease
- 11:30 – 12:00 T. Hartmann, University of Heidelberg, Germany  
 $\gamma$ -secretase mediated lipid homeostasis in Alzheimer's Disease
- 12:00 – 12:30 R. Fluhner, University of Munich, Germany  
A proteolytic mechanism for intramembrane proteolysis is shared by  $\gamma$ -secretase and SPPL2

*12:30 – 13:30 Lunch*

*13:30 – 15:00 Time for recreation (hiking, swimming, sauna)*

**15:00 – 19:00 Secretases II**

*Chair: U. Müller*

- 15:00 – 15:30 P. Saftig, University of Kiel, Germany  
 $\alpha$ -secretase and cell adhesion
- 15:30 – 16:00 F. Fahrenholz, University of Mainz, Germany  
Upregulation of the non-amyloidogenic  $\alpha$ -secretase pathway
- 16:00 – 16:30 S. Lichtenthaler, University of Munich, Germany  
Cellular regulation of APP-shedding
- 16:30 – 17:00 G. Multhaup, Free University of Berlin, Germany  
APP dimerization and transmembrane cleavage
- 17:30 – 18:00 S. Kins, University of Heidelberg, Germany  
The subcellular transport of the APP family
- 18:00 – 18:30 J. Walter, University of Bonn, Germany  
Membrane components involved in proteolytic processing of APP
- 18:30 – 19:00 C. Pietrzik, University of Mainz, Germany  
Influence of LRP on APP processing

*17:00 – 17:30 Coffee Break*

*19:15 Dinner*

**Friday, April 7**

**9:00 – 12:00 Tau, Aggregation and Alzheimer's disease**

*Chair: J. Walter*

- 9:00 – 9:30 F. LaFerla, University of California, Irvine, USA  
Antibodies and tau interactions: Lessons from transgenic mice
- 9:30 – 10:00 F. van Leuven, Experimental Genetics Group, University of Leuven, Belgium  
Amyloid and tau do not mix well
- 10:00 – 10:30 C. Glabe, University of California, Irvine, USA  
Common mechanisms of amyloid aggregation and pathogenesis

*10:30 – 11:00 Coffee Break*

- 11:00 – 11:20 C. Goldsbury, Max-Planck-Unit for Structural Molecular Biology, Hamburg, Germany  
Interference between APP and tau during axonal transport
- 11:20 – 11:40 M. Mocanu, Max-Planck-Unit for Structural Molecular Biology, Hamburg, Germany  
Toxicity of tau aggregation in inducible transgenic mice
- 11:40 – 12:00 E. Mandelkow, Max-Planck-Unit for Structural Molecular Biology, Hamburg, Germany  
Pathological conformation and aggregation of tau in vitro and in cell models

*12:00 – 13:00 Lunch*

*13:00 – 14:30 Time for recreation (hiking, swimming, sauna)*

**14:30 – 16:30 Model Systems**

*Chair: F. Fahrenholz*

- 14:30 – 15:00 K. Duff, Nathan S. Kline Institute for Psychiatric Research, Orangeburg, USA  
Phosphorylation as a pathogenic mechanism in Alzheimers' s Disease
- 15:00 – 15:30 M. Shelanski, Columbia University, New York, USA  
Role of UCh-LI in memory in Alzheimer's Disease
- 15:30 – 16:00 U. Müller, University of Heidelberg, Germany  
Progress in genetic dissection of mammalian APP function
- 16:00 – 16:30 M. Jucker, University of Tübingen, Germany  
Exogenous induction of cerebral amyloidosis

*16:30 – 17:00 Coffee Break*

**17:00 – 19:00 Drug Development & Therapeutic Strategies**

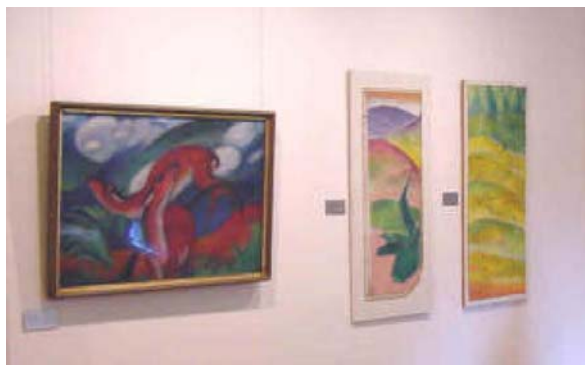
*Chair: H. Steiner*

- 17:00 – 17:30 C. Hock, University of Zurich, Switzerland  
Clinical observations with AN-1792 using TAPIR analysis
- 17:30 – 18:00 M. Buttini, Elan Pharmaceuticals, San Francisco, USA  
Targeting amyloid- $\beta$  through immunotherapy or BACE1 inhibition
- 18:00 – 18:30 S. Weggen, University of Mainz, Germany  
Selective modulation of A $\beta$ 42 production: Nonsteroidal anti-inflammatory drugs (NSAIDs) and beyond
- 18:30 – 19:00 B. Schmidt, Technical University of Darmstadt, Germany  
Fishing with NSAIDS –  $\gamma$ -secretase a slippery fish?

*19:15 Dinner*

## Saturday, April 8

*10:00 – 16:00 Excursion to Franz Marc Museum and Kochelsee*



*19:00 Dinner*